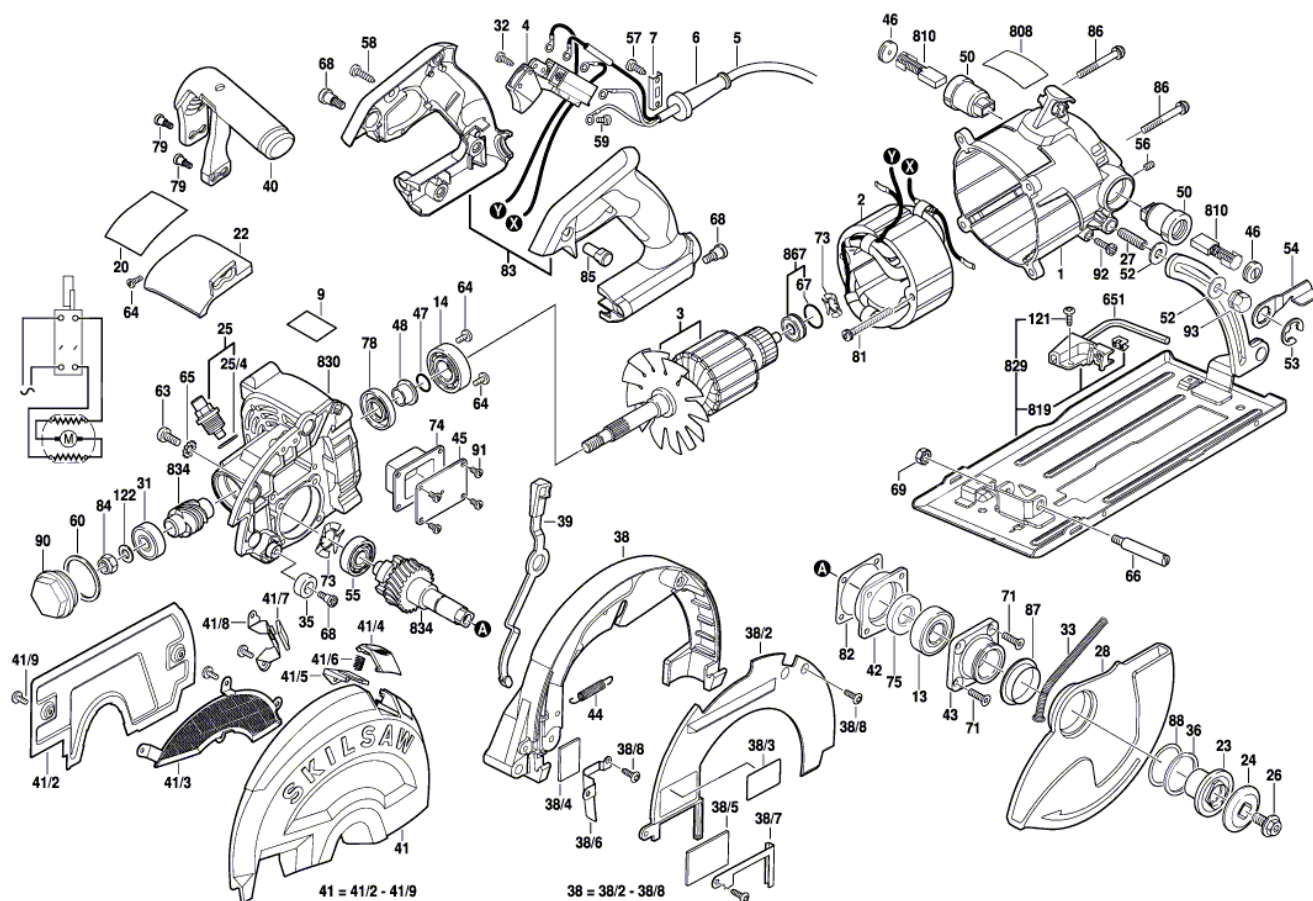




Product Description: Circular Saw
Model Number: SPT78MMC-01/22
Body Number: 0610218001
Version: A
Issue Date: 2016/01/26



No.	Product Model#	Part Number	Description	Qty
1	SPT78MMC-22	3422086001	Motor Housing	1
2	SPT78MMC-22	2740459001	Stator	1
3	SPT78MMC-22	2751122001	Rotor	1
4	SPT78MMC-22	4870621001	Trigger Switch	1
5	SPT78MMC-22	4810003251	Power Cord & Plug	1
6	SPT78MMC-22	3129140001	Cord Guard	1
7	SPT78MMC-22	3706465001	Cord Anchorage	1
9	SPT78MMC-22	2244067004	Nameplate	1
13	SPT78MMC-22	5700058006	Ball Bearing	1
14	SPT78MMC-22	5700058007	Ball Bearing	1
20	SPT78MMC-22	2243684004	Warning Label	1
22	SPT78MMC-22	3129158001	Hood	1
23	SPT78MMC-22	3521031001	Inner Flange	1
24	SPT78MMC-22	3521030001	Outer Flange	1
25	SPT78MMC-22	2825427001	Spindle Lock ASSY	1
25/4	SPT78MMC-22	5690378001	O Ring	1
26	SPT78MMC-22	5620589001	Flange Bolt	1
27	SPT78MMC-22	5620587001	Hexagon Socket Screw	1
28	SPT78MMC-22	3422084001	Lower guard	1
31	SPT78MMC-22	5700013012	Ball Bearing	1
32	SPT78MMC-22	5610328001	Hexalobular Socket Screw	1
33	SPT78MMC-22	3660679002	Tension Spring	1
35	SPT78MMC-22	3129217001	Stopper	1
36	SPT78MMC-22	5660250001	Circlip For Shaft	1
38	SPT78MMC-22	2822198001	Upper guard	1
38/2	SPT78MMC-22	3706434001	Protecting Cap	1
38/3	SPT78MMC-22	2243054031	Warning Label	1
38/4	SPT78MMC-22	3690154001	Transparent Guard	1
38/5	SPT78MMC-22	3690153001	Transparent Guard	1
38/6	SPT78MMC-22	3706438001	Support	1
38/7	SPT78MMC-22	3706437001	Support	1
38/8	SPT78MMC-22	5610326001	Hexalobular Socket Screw	3
39	SPT78MMC-22	3402916001	Moving Guard Lever	1
40	SPT78MMC-22	2822177001	Carrying Handle ASSY	1
41	SPT78MMC-22	2822075001	Dust Removal ASSY	1
41/2	SPT78MMC-22	3706444001	Cover	1
41/3	SPT78MMC-22	3706443001	Cover	1
41/4	SPT78MMC-22	3422103001	Button	1
41/5	SPT78MMC-22	3706446001	Support	1
41/6	SPT78MMC-22	3660670001	Compression Spring	1
41/7	SPT78MMC-22	3690156001	Transparent Guard	1
41/8	SPT78MMC-22	3706448001	Support	1
41/9	SPT78MMC-22	5610325001	Thread Forming Screw	7
42	SPT78MMC-22	3422074001	Bearing Holder	1
43	SPT78MMC-22	3521015001	Bearing Cover	1
44	SPT78MMC-22	3660672001	Tension Spring	1

No.	Product Model#	Part Number	Description	Qty
45	SPT78MMC-22	3706401001	Cover	1
46	SPT78MMC-22	3129240001	Brush Cover	2
47	SPT78MMC-22	5690368001	O Ring	1
48	SPT78MMC-22	3552844001	Bush	1
50	SPT78MMC-22	2800265001	Brush Holder	2
52	SPT78MMC-22	5650641001	Plain Washer	2
53	SPT78MMC-22	5660252001	Circlip	1
54	SPT78MMC-22	3706392001	Lock Lever	1
55	SPT78MMC-22	5700008030	Ball bearing	1
56	SPT78MMC-22	5620588001	Hexagon Socket Screw	2
57	SPT78MMC-22	5610323001	Hexalobular Socket Screw	2
58	SPT78MMC-22	5610324001	Hexalobular Socket Screw	5
59	SPT78MMC-22	5610334001	Screw with Washer	1
60	SPT78MMC-22	5690372001	O Ring	1
63	SPT78MMC-22	5620590001	Hexagon Socket Screw	3
64	SPT78MMC-22	5610325001	Thread Forming Screw	4
65	SPT78MMC-22	5650615001	Lock Washer	3
66	SPT78MMC-22	5620591001	Shoulder Screw	1
67	SPT78MMC-22	5690376001	O Ring	1
68	SPT78MMC-22	5620592001	Shoulder Screw	4
69	SPT78MMC-22	5630311001	Nut	1
71	SPT78MMC-22	5620593001	Hexagon Socket Screw	4
73	SPT78MMC-22	5650616001	Spring Washer	2
74	SPT78MMC-22	5690373001	Rubber Gasket	1
75	SPT78MMC-22	5690374001	Frame Seal	1
78	SPT78MMC-22	5690375001	Frame Seal	1
79	SPT78MMC-22	5620600001	Shoulder Screw	4
81	SPT78MMC-22	5620608001	Screw with Washer	2
82	SPT78MMC-22	3706396001	Gasket Seal	1
83	SPT78MMC-22	3900083001	Handle Assembly	1
84	SPT78MMC-22	5630312001	Nut	1
85	SPT78MMC-22	5640260001	Lock Bolt	1
86	SPT78MMC-22	5620609001	Screw with Washer	4
87	SPT78MMC-22	3129149001	Bush	1
88	SPT78MMC-22	3706425001	Bushing	1
90	SPT78MMC-22	3129151001	Bearing Cover	1
91	SPT78MMC-22	5610326001	Hexalobular Socket Screw	4
92	SPT78MMC-22	5610327001	Screw with Washer	1
93	SPT78MMC-22	5630313001	Acorn Nut	1
121	SPT78MMC-22	5620612001	Screw with Washer	1
122	SPT78MMC-22	5650622001	Plain Washer	1
651	SPT78MMC-22	5680224001	Hexagon Wrench	1
808	SPT78MMC-22	2244293001	Nameplate	1
810	SPT78MMC-22	4960371001	Brush Assembly	1
819	SPT78MMC-22	2826242001	Spring Support	1
829	SPT78MMC-22	2826241001	Base Plate Set	1

No.	Product Model#	Part Number	Description	Qty
830	SPT78MMC-22	2826243001	Gear Case ASSY	1
834	SPT78MMC-22	2826246001	Gear Assembly	1
867	SPT78MMC-22	2825668001	Bearing Assembly	1